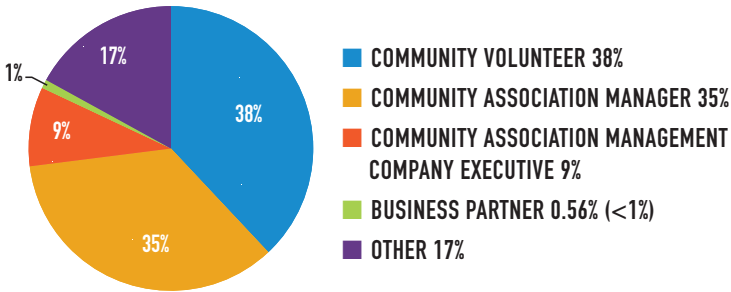


Snap Survey

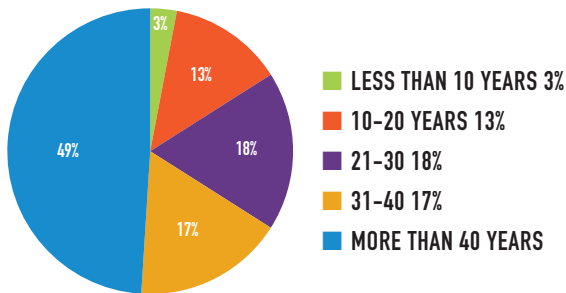
SEPTEMBER 2025

719 Respondents

What is your role in the industry?



What is the age of your community's oldest buildings or structures?



What type of community association(s) do you represent?

- 44%** Condominium (6 or less floors)
- 40%** Single-Family Homeowners Association
- 25%** Townhome (6 or less floors)
- 21%** Condominium High Rise (7 or more floors)
- 11%** Mixed-Use Development
- 10%** Other
- 4%** Housing Cooperative

Other common trends

- Commercial condos
- Master-planned communities
- PUDs
- 55+ communities
- RV communities

What is the size of your community (number of units)?

- 28%** 500+ units
- 21%** 100-199 units
- 21%** 200-499 units
- 16%** 50-99 units
- 14%** Less than 50 units

Does your community conduct regular reserve studies?

- 49%** Yes, every 3 years or less
- 33%** Yes, every 4-5 years
- 8%** Yes, more than 5 years old
- 5%** No, we do not conduct reserve studies
- 4%** No, but we plan to start

What percentage of your community's annual budget is allocated to reserves?

- 43%** 10%-20%
- 23%** 21%-30%
- 13%** More than 30%
- 12%** Less than 10%
- 9%** Not sure

Has your community experienced challenges in funding reserve accounts?

- 36%** No
- 32%** Yes, consistently
- 32%** Occasionally

What is your primary method for funding major repairs?

- 76%** Reserve funds
- 16%** Special assessments
- 5%** Other
- 3%** Loans

Does your community utilize technology (e.g., drones, IoT sensors) for building inspections or maintenance?



The Foundation for Community Association Research provides authoritative research and analysis on community association trends, issues, and operations.

foundation.caionline.org | (888) 224-4321

FOUNDATION FOR
COMMUNITY ASSOCIATION
research
DATA DRIVEN. INDUSTRY FOCUSED.

SPONSORED BY

ncb
National Cooperative Bank

Snap Survey

SEPTEMBER 2025

719 Respondents

How often are formal building inspections conducted in your community?

- 26% Annually
- 26% Only when an issue arises
- 19% Every 5 years
- 14% Other
- 12% Not conducted
- 3% Every 10 years

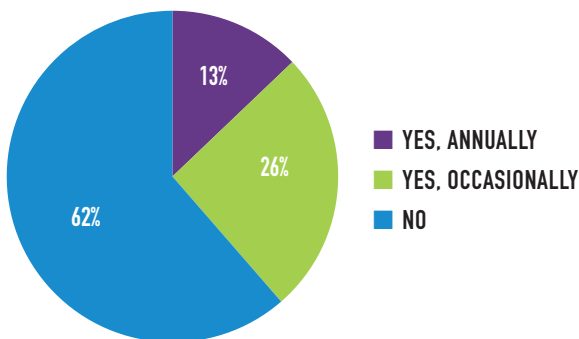
Other common trends

- Every 3 years (often aligned with reserve studies)
- Every 9 years (especially for balconies due to regulations)
- Monthly or Quarterly (mainly for specific components or by staff/management)
- Every 25 years (rarely mentioned)

What impact has the current insurance crisis had on your community?

- 74% Increased premiums
- 9% No impact
- 8% Other
- 6% Difficulty obtaining required coverage
- 4% Cancellation of policies

Does your community have a formal disaster preparedness plan?



Have you encountered significant issues with any of the following building systems in the past 5 years?

- 56% Roofing
- 51% Plumbing
- 42% Structure (e.g., building envelope, foundation, walls)
- 32% HVAC systems
- 29% Windows or exterior doors
- 27% Elevators
- 26% Electrical systems
- 19% Other
- 18% Fireproofing and fire protection

Other common trends:

- Decks, Balconies, and Stairs
- Water Systems, main water line breaks, plumbing, septic, sewer, drainage issues (gutters, downspouts, storm drains).
- Roofing, roof replacements, bowed roofs, hurricane damage repairs.
- Roads, Streets, and Paving
- Sidewalk repairs, driveways, streets, stormwater management.

Has your community faced challenges related to climate change (e.g., flooding, extreme weather)?



If yes, what measures has your community implemented to address these challenges?

- 27% Updating drainage systems
- 20% Creating emergency preparedness plans
- 15% Retrofitting or strengthening infrastructure
- 7% Purchasing additional insurance coverage

Other common trends:

- Repairs and maintenance
- Emergency & hazard preparedness
- Planning & oversight
- Owner/insurance responsibility

The Foundation for Community Association Research provides authoritative research and analysis on community association trends, issues, and operations.

foundation.caionline.org | (888) 224-4321

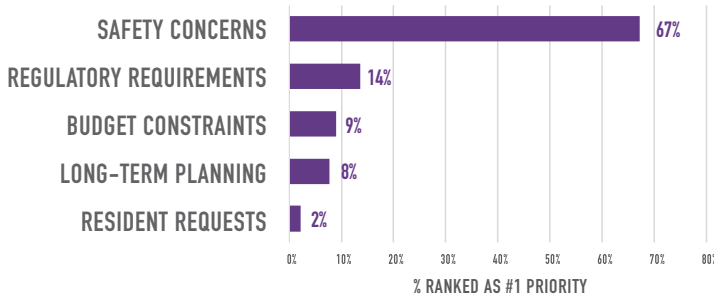
SPONSORED BY

Snap Survey

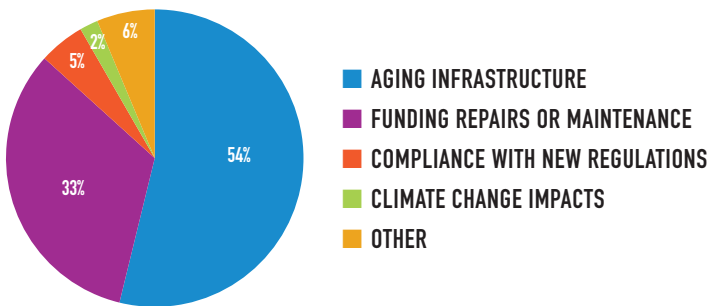
SEPTEMBER 2025

719 Respondents

What factors influence the prioritization of infrastructure repairs?



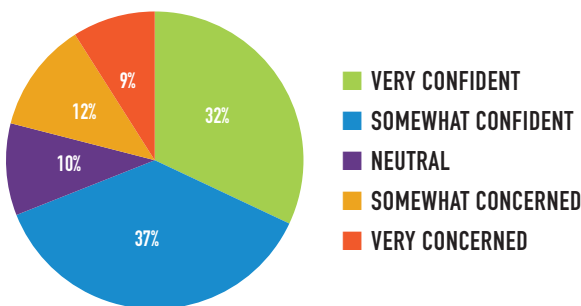
What is the biggest infrastructure-related challenge facing your community today?



Other common trends:

- Lack of Proper Long-Term Financial Planning
- Insurance coverage
- Varied preparedness across communities

How confident are you in your community's ability to address infrastructure needs over the next 5 years?



Do you believe new technologies (e.g., AI, predictive maintenance) will improve infrastructure management in your community?



What resources would be most helpful in addressing your community's infrastructure challenges?

- 58% Education/training for board members or managers
- 43% Financial assistance (e.g., loans, grants)
- 43% Technology for maintenance and inspections
- 35% Legislative support
- 29% Guidance on reserve studies
- 9% Other

Other common trends:

- Peer case studies
- Vendor partnerships
- Volunteer support
- Long-term policy guidance

What steps is your community taking to modernize its infrastructure?

- 23% Upgrading energy systems (e.g., solar, energy-efficient HVAC)
- 12% Other
- 10% Implementing green building practices
- 9% Investing in smart home technologies
- 7% None at this time

Other common trends

- Planning and assessment
- Feasibility studies
- Targeted repairs

The Foundation for Community Association Research provides authoritative research and analysis on community association trends, issues, and operations.

foundation.caionline.org | (888) 224-4321

FOUNDATION FOR
COMMUNITY ASSOCIATION
research
DATA DRIVEN. INDUSTRY FOCUSED.

SPONSORED BY

ncb
National Cooperative Bank

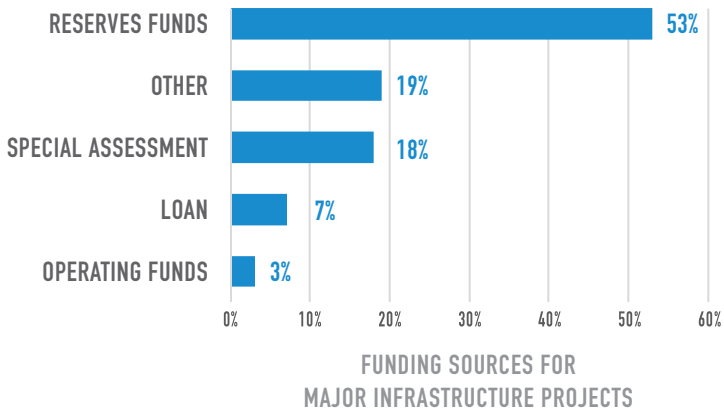
AGING INFRASTRUCTURE: STRUCTURAL INTEGRITY & FINANCIAL SUSTAINABILITY

Snap Survey

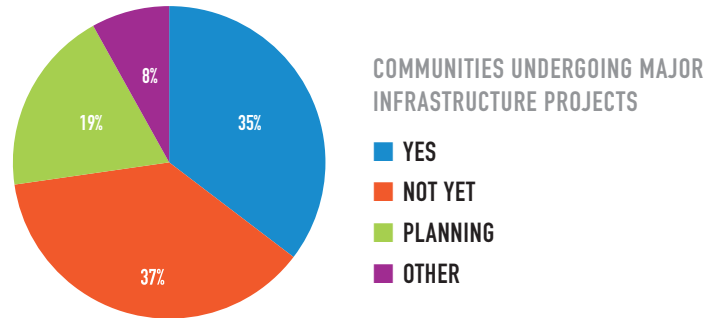
SEPTEMBER 2025

719 Respondents

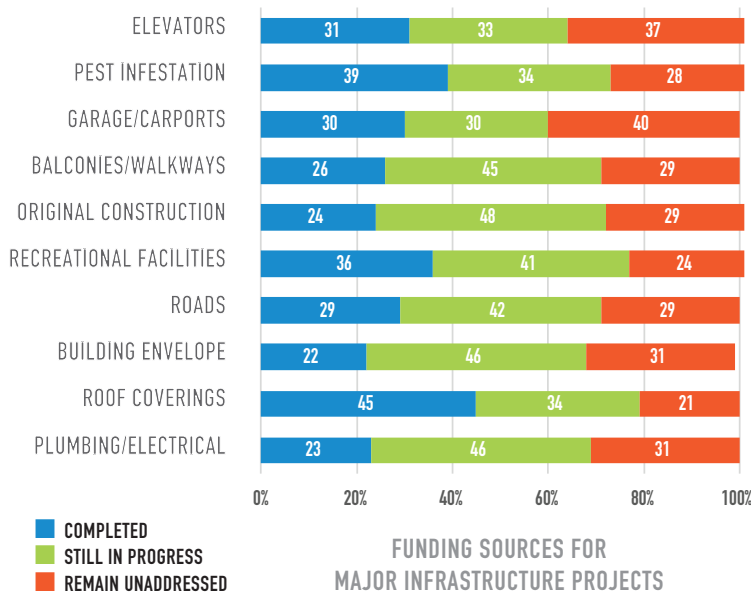
Percentage of communities using each funding source for major infrastructure improvements.



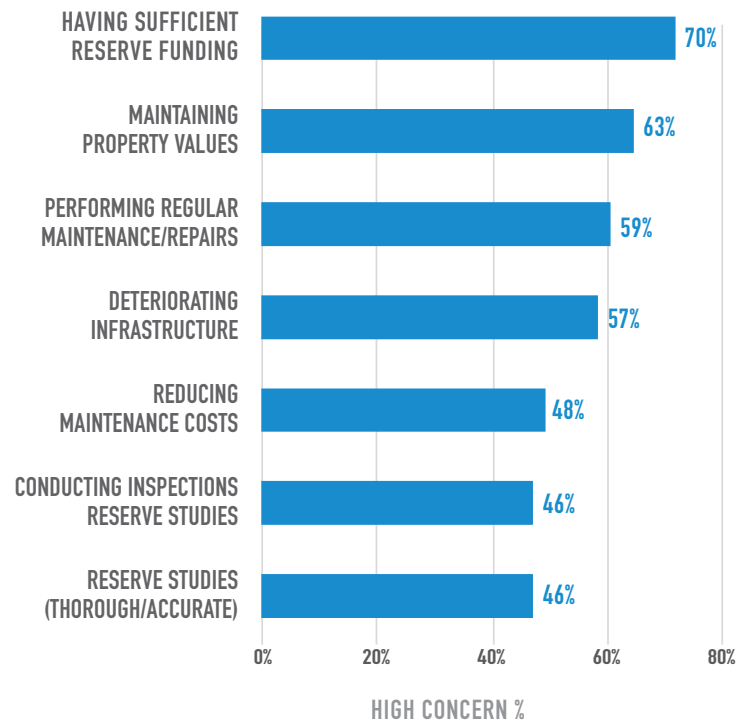
Breakdown of whether communities are currently engaged in, planning, or not yet undertaking major projects.



Distribution of responses showing which issues have been completed, are still in progress, or remain unaddressed in the past three years.



Percentage of respondents rating each issue as a high concern.



The Foundation for Community Association Research provides authoritative research and analysis on community association trends, issues, and operations.

foundation.caionline.org | (888) 224-4321

FOUNDATION FOR
COMMUNITY ASSOCIATION
research
DATA DRIVEN. INDUSTRY FOCUSED.

SPONSORED BY

ncb
National Cooperative Bank